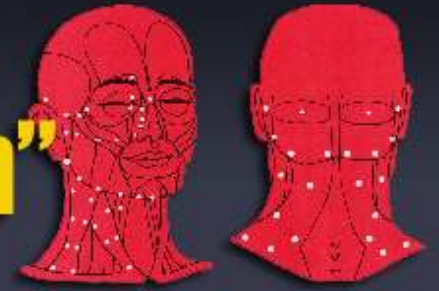


Advanced Qi Power Training



“Instructors Certification”



Triangulating Energy

“The Closed System”

Triangulation Theory

This is the concept of having 3 or more individuals use their chi energy for a common cause. Most used for manipulation or healing purposes.

“For where two or three come together in my name, there am I with them.” Matthew 18:20

Exponential Power Generation

With Triangulation of the energy, you have more power output with the group than that of any one individual in that group...

How Use Triangulating Energy

- Manipulation
 - For business growth
 - For a job
 - For a car
 - For a home
 - The list is endless
- Healing
- Sending Energy to Someone to “Chi” Them Up

Setting Up a Base Triangle



Target

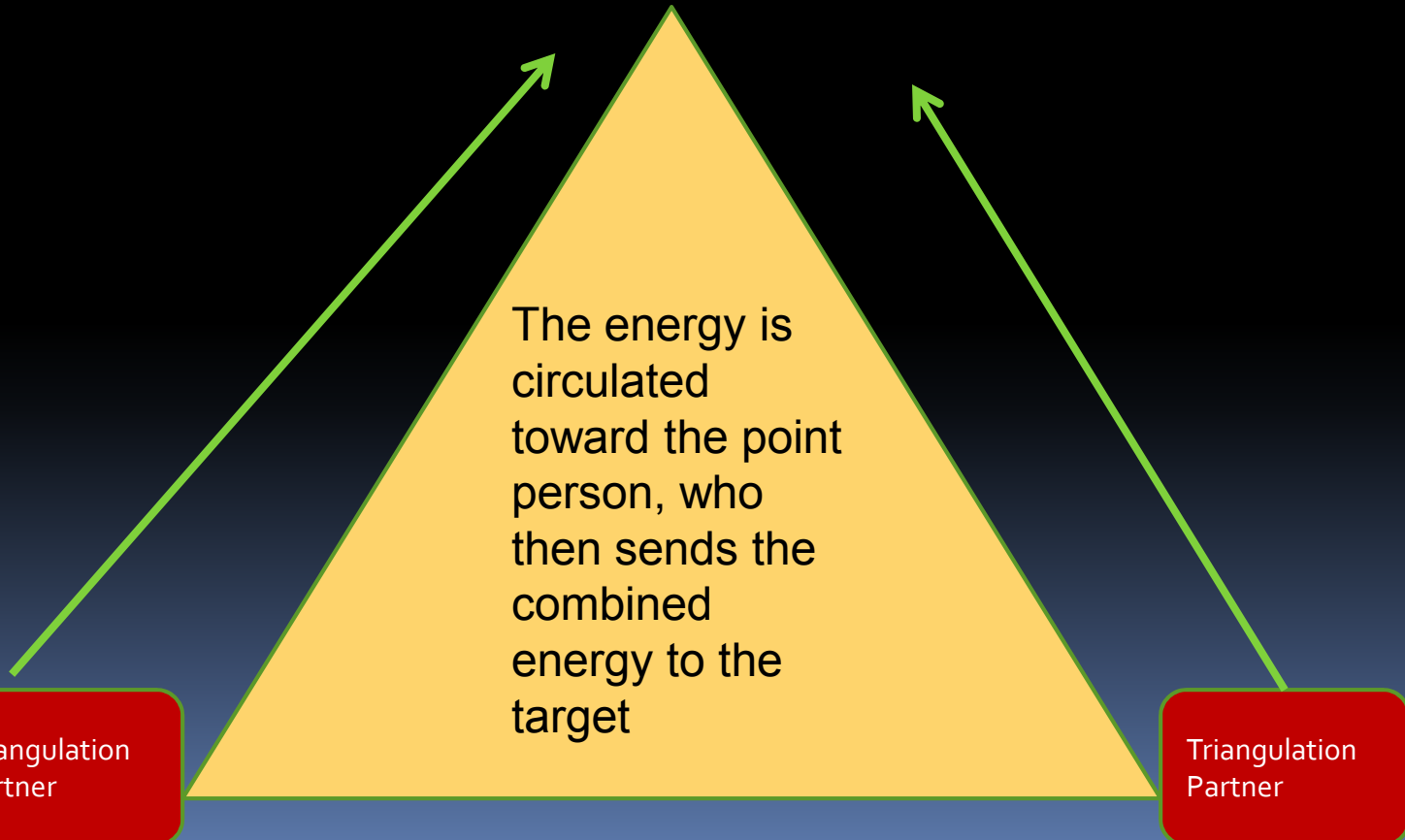


Lead or
Point
Person

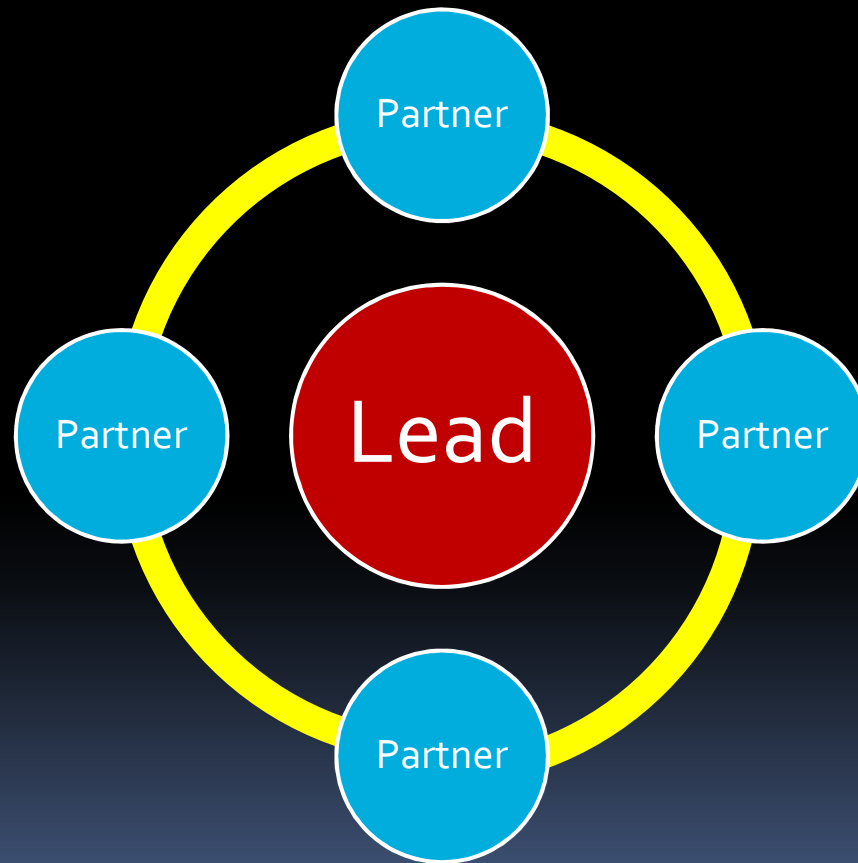
The energy is
circulated
toward the point
person, who
then sends the
combined
energy to the
target

Triangulation
Partner

Triangulation
Partner



Setting Up a Chi Circle



Setting Up The Triangulation

- Specify The Target
 - Name/Photo
 - Location
 - Any challenges on the target
- Specify a Time to Triangulate
- Have Partners You Can Rely On
- The Best Times are 12am/12pm
- You only need to send out the chi for 5-10 minutes
- Be very specific with the results you are seeking
- Do it everyday at 12/12 until the objective has been accomplished

How to Send The Chi

- Circular Chi
- You can use a Chi Stick
- Good feeling cool chi
- Euphoric and Blissful
- Send a color (see color training)
- “ This energy is going to cause you to **FEEL REAL GOOD**”
- Picture it enveloping the target with all of this good feeling energy. Wrap the package with color, sound and energy

Advanced Concepts

- Circulate the Chi While Asleep
- *“I am penetrating deep into my subconscious mind, I have the ability to send my energy across time and space. As I sleep tonight, I direct my subconscious to circulate the chi out every hour on the hour for 5 minutes for the purpose of (**target**). The energy will be euphoric and blissful and will cause (**target**) to know this is a win/win situation and in their best interest.”*

Advanced Concepts Part 2

- Direct The Target Precisely
- *You Will Like This*
- *It Will Allow You to (reason)*
- *It will cause you to feel real good*
- *You will know this is the right decision*
- *You will notice an good feeling energy and subconsciously, you'll know its from me.*

Conclusion

- Depending on Partners Use the Triangle or Circle Structure
- Always specify the result you desire
- Don't send the energy out if you are not in a good mood or energy level
- Send out the energy at the same time every day.
- Package the chi to be delivered
- Always know the power you have in your hands at all time.